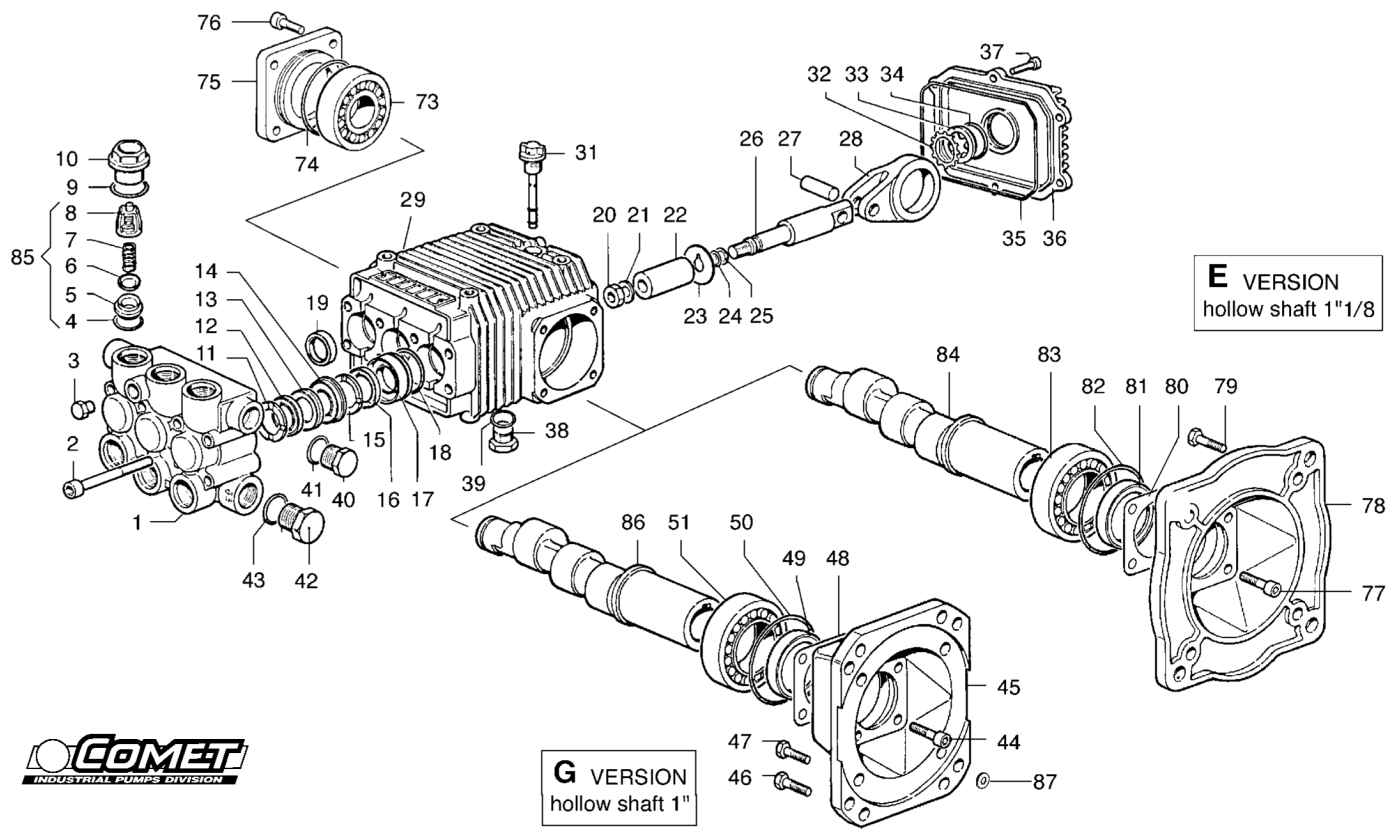


# FWD VERSION - 3400 RPM



| ITEM | PART No.     | KIT | DESCRIPTION             | Qty. | MODELS |
|------|--------------|-----|-------------------------|------|--------|
| 1    | 3218.0110.00 |     | MANIFOLD Ø18 mm         | 1    |        |
| 2    | 3609.0039.00 |     | SCREW M8X70             | 8    |        |
| 3    | 3202.0112.00 |     | CAP 1/4"                | 1    |        |
| 4    | 1210.0046.00 | A-D | O-RING 2,62X 17,13 mm   | 6    |        |
| 5    | 3009.0087.00 | A   | VALVE SEAT              | 6    |        |
| 6    | 3604.0017.00 | A   | VALVE PLATE             | 6    |        |
| 7    | 1802.0177.00 | A   | SPRING                  | 6    |        |
| 8    | 1205.0025.00 | A   | VALVE CAGE              | 6    |        |
| 9    | 1210.0048.00 | A-D | O-RING 2,62X 20,24 mm   | 6    |        |
| 10   | 3202.0155.00 |     | CAP                     | 6    |        |
| 11   | 0009.0199.00 | B   | HEAD RING Ø18 mm        | 3    |        |
| 12   | 1241.0026.00 | B   | PACKING 18x32 mm        | 3    |        |
| 13   | 0009.0100.00 | B   | PACKING Ø18 mm          | 3    |        |
| 14   | 0009.0200.00 |     | INTERMED. RING Ø18 mm   | 3    |        |
| 15   | 0009.0199.00 | B   | HEAD RING Ø18 mm        | 3    |        |
| 16   | 1241.0026.00 | B   | PACKING 18x32 mm        | 3    |        |
| 17   | 0009.0102.00 |     | PACKING RETAINER Ø18 mm | 3    |        |
| 18   | 1210.0156.00 | B-D | O-RING 1,78X31,47 mm    | 3    |        |
| 19   | 0019.0066.00 | D   | OIL SEAL 20X30X5 mm     | 3    |        |
| 20   | 0600.0054.00 | C   | NUT                     | 3    |        |
| 21   | 2811.0082.00 | C   | WASHER 8,2X17X1,5 mm    | 3    |        |
| 22   | 0202.0022.00 | C   | PISTON Ø18 mm           | 3    |        |
| 23   | 2812.0042.00 | C   | WASHER                  | 3    |        |
| 24   | 1210.0039.00 | C-D | O-RING 1,78X 7,66 mm    | 3    |        |

| ITEM | PART No.     | KIT | DESCRIPTION           | Qty. | MODELS |
|------|--------------|-----|-----------------------|------|--------|
| 25   | 0009.0170.00 | C-D | ANTI-EXTR. RING       | 3    |        |
| 26   | 2409.0048.00 |     | PISTON GUIDES         | 3    |        |
| 27   | 3011.0016.00 |     | WRIST. PIN Ø10X29 mm  | 3    |        |
| 28   | 0205.0044.00 |     | CON. ROD              | 3    |        |
| 29   | 0403.0130.00 |     | CRANKCASE             | 1    |        |
| 31   | 3200.0051.00 |     | OIL DIPSTICK          | 1    |        |
| 32   | 3019.0033.00 |     | SNAP RING Ø18 mm      | 1    |        |
| 33   | 3201.0012.00 |     | OIL INDICATOR         | 1    |        |
| 34   | 1210.0333.00 | D   | O-RING 1,78X23,52 mm  | 1    |        |
| 35   | 1210.0216.00 | D   | O-RING 2,62X107,62 mm | 1    |        |
| 36   | 0402.0169.00 |     | CRANKCASE COVER       | 1    |        |
| 37   | 3609.0030.00 |     | SCREW M5X20           | 6    |        |
| 38   | 3200.0007.00 |     | CAP 3/8 GAS           | 2    |        |
| 39   | 1210.0093.00 | D   | O-RING 1,78X 14 mm    | 1    |        |
| 40   | 3200.0007.00 |     | CAP 3/8 GAS           | 2    |        |
| 41   | 2811.0084.00 |     | WASHER 16,7X22X1,5 mm | 1    |        |
| 42   | 3202.0015.00 |     | CAP G1/2              | 1    |        |
| 43   | 2811.0086.00 |     | WASHER 21,2X27X1,5 mm | 1    |        |
| 73   | 0440.0012.00 |     | ROLLER BEARING        | 1    |        |
| 74   | 1210.0388.00 | D   | O-RING                | 1    |        |
| 75   | 0402.0171.00 |     | FLANGE                | 1    |        |
| 76   | 3609.0032.00 |     | SCREW M6X20           | 4    |        |
| 85   | 1220.0030.00 |     | VALVE ASS.BLY         | 6    |        |